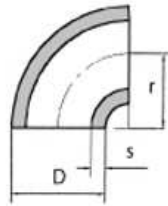




WERNER FISCHER AG
STAHLROHRE



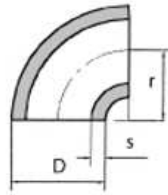
Nahtlose Rohrbogen

Bauart 3 90°/180°, DIN 2605-1, WZ 2.2 nach EN 10204

Aussendurchmesser D	Wandstärke s	Radius r	Gewicht/Stk.
mm	mm	mm	kg
21.3	2.0	28.0	0.04
25.0	2.0	27.5	0.05
26.9	2.3	29.0	0.06
30.0	2.6	33.5	0.10
33.7	2.6	38.0	0.12
38.0	2.6	45.0	0.16
42.4	2.6	48.0	0.19
44.5	2.6	51.0	0.22
48.3	2.6	57.0	0.26
51.0	2.6	63.5	0.31
57.0	2.9	72.0	0.44
60.3	2.9	76.0	0.49
63.5	2.9	82.5	0.56
70.0	2.9	92.0	0.69
76.1	2.9	95.0	0.78
82.5	3.2	107.5	1.06
88.9	3.2	114.0	1.21
101.6	3.6	133.5	1.83
108.0	3.6	142.5	2.08
114.3	3.6	152.0	2.35
121.0	4.0	170.0	3.08
127.0	4.0	175.0	3.34
133.0	4.0	181.0	3.62
139.7	4.0	190.0	4.00



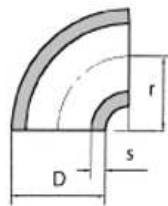
WERNER FISCHER AG
STAHLROHRE



Nahtlose Rohrbogen

Bauart 3 90°/180°, DIN 2605-1, WZ 2.2 nach EN 10204

Aussendurchmesser D	Wandstärke s	Radius r	Gewicht/Stk.
mm	mm	mm	kg
159.0	4.5	216.0	5.82
168.3	4.5	229.0	6.54
193.7	5.6	270.0	10.60
219.1	6.3	305.0	15.80
244.5	6.3	340.0	19.80
267.0	6.3	378.0	24.10
273.0	6.3	381.0	24.80
323.9	7.1	457.0	39.80
355.6	8.0	533.0	57.40
368.0	8.0	533.0	60.10
406.4	8.8	610.0	82.70
419.0	10.0	610.0	96.50
457.0	10.0	686.0	119.00
508.0	11.0	762.0	161.00
610.0	12.5	914.0	260.00



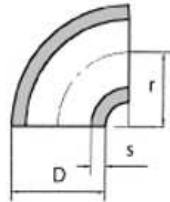
Nahtlose Rohrbogen

Bauart 3 90°, DIN 2605-1, WZ 3.1 nach EN 10204

Aussendurchmesser D	Wandstärke s	Radius r	Gewicht/Stk.
mm	mm	mm	kg
219.1	8.0	305.0	19.90
273.0	6.3	381.0	24.80
273.0	10.0	381.0	38.90
323.9	7.1	457.0	39.80
355.6	8.0	533.0	57.40
368.0	8.0	533.5	59.50
406.4	8.8	610.0	82.70
419.1	10.0	609.5	95.80
457.0	10.0	686.0	119.00
508.0	11.0	762.0	161.00
610.0	12.5	914.0	260.00



WERNER FISCHER AG
STAHLROHRE



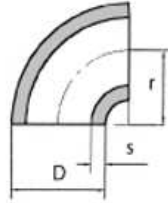
Nahtlose Rohrbogen

Bauart 3 90°, DIN 2605-1, WZ 3.1 nach EN 10204

Aussendurchmesser D	Wandstärke s	Radius r	Gewicht/Stk.
mm	mm	mm	kg
21.3	2.0	28.0	0.04
26.9	2.3	29.0	0.06
33.7	2.6	38.0	0.12
33.7	4.0	38.0	0.18
42.4	2.6	48.0	0.19
48.3	2.6	57.0	0.26
48.3	4.0	57.0	0.39
60.3	2.9	76.0	0.49
60.3	4.0	76.0	0.67
60.3	4.5	76.0	0.74
60.3	5.6	76.0	0.90
76.1	2.9	95.0	0.78
76.1	4.5	95.0	1.19
88.9	3.2	114.0	1.20
88.9	5.6	114.0	2.07
108.0	3.6	142.5	2.08
114.3	3.6	152.0	2.35
114.3	6.3	152.0	4.02
133.0	4.0	181.0	3.62
139.7	4.0	190.0	4.00
159.0	4.5	216.0	5.82
168.3	4.5	229.0	6.54
168.3	7.1	229.0	10.20
219.1	6.3	305.0	15.80



WERNER FISCHER AG
STAHLROHRE



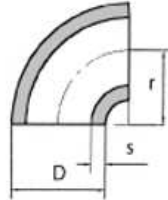
Nahtlose Rohrbogen

Bauart 5 90°, DIN 2605-1, WZ 3.1 nach EN 10204

Aussendurchmesser D	Wandstärke s	Radius r	Gewicht/Stk.
mm	mm	mm	kg
21.3	2.0	42.5	0.10
26.9	2.3	57.5	0.13
33.7	2.6	72.5	0.23
38.0	2.6	82.5	0.29
42.4	2.6	92.5	0.37
48.3	2.6	107.5	0.50
57.0	2.9	127.5	0.82
60.3	2.9	135.0	0.88
76.1	2.9	175.0	1.45
88.9	3.2	205.0	2.23
101.6	3.6	237.5	3.25
108.0	3.6	252.5	3.67
114.3	3.6	270.0	4.17
133.0	4.0	312.5	6.30
139.7	4.0	330.0	7.20
159.0	4.5	375.0	10.20
168.3	4.5	390.0	11.20
219.1	6.3	510.0	26.50
273.0	6.3	650.0	41.50
323.9	7.1	775.0	67.50
355.6	8.0	850.0	94.60
406.4	8.8	970.0	131.00
508.0	11.0	1245.0	265.00
609.6	12.5	1525.0	441.00



WERNER FISCHER AG
STAHLROHRE



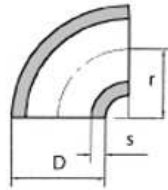
Nahtlose Rohrbogen

Bauart 2 90°, DIN 2605-1, WZ 3.1 nach EN 10204

Aussendurchmesser D	Wandstärke s	Radius r	Gewicht/Stk.
mm	mm	mm	kg
33.7	2.6	25.0	0.08
42.4	2.6	32.0	0.13
48.3	2.6	38.0	0.18
57.0	2.9	52.5	0.32
60.3	2.9	51.0	0.33
76.1	2.9	63.0	0.58
88.9	3.2	76.0	0.81
101.6	3.6	95.0	1.22
108.0	3.6	100.0	1.46
114.3	3.6	102.0	1.58
133.0	4.0	125.0	2.50
139.7	4.0	127.0	2.67
159.0	4.5	150.0	4.04
168.3	4.5	152.0	4.34
219.1	6.3	203.0	10.50
273.0	6.3	254.0	16.50
323.9	7.1	305.0	26.60
355.6	8.0	356.0	38.50
406.4	8.8	406.0	55.00
457.0	10.0	457.0	80.00
508.0	11.0	508.0	109.00
609.6	12.5	610.0	175.00



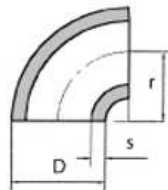
WERNER FISCHER AG
STAHLROHRE



Nahtlose Gasrohrbogen

Bauart 3 90°, WZ 2.2 nach EN 10204

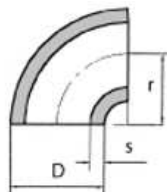
Aussendurchmesser D	Wandstärke s	Radius r	Gewicht/Stk.
Zoll mm	mm	mm	kg/90°
3/8" 17.2	2.35	27.5	0.035
1/2" 21.3	2.65	30.0	0.050
3/4" 26.9	2.65	37.5	0.090
1" 33.7	3.25	45.0	0.150
1 1/4" 42.4	3.25	60.0	0.250
1 1/2" 48.3	3.25	65.0	0.340
2" 60.3	3.65	80.0	0.600
2 1/2" 76.1	3.65	106.0	1.000
3" 88.9	4.05	117.5	1.515
4" 114.3	4.50	160.0	3.000



Nahtlose Gasrohrbogen

Bauart 5 90°, WZ 2.2 nach EN 10204

Aussendurchmesser D	Wandstärke s	Radius r	Gewicht/Stk.
Zoll mm	mm	mm	kg
1" 33.7	3.25	72.5	0.250
1 1/4" 42.4	3.25	92.5	0.425
1 1/2" 48.3	3.25	107.5	0.530



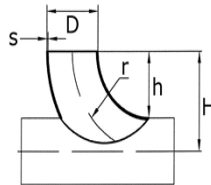
Geschweisste Rohrbogen

Bauart 3 90°, DIN 2605-1

Aussendurchmesser D	Wandstärke s	Radius r	Gewicht/Stk.
mm	mm	mm	kg
355.6	5.6	533.0	41.40
406.4	6.3	610.0	60.90
508.0	6.3	762.0	95.30
610.0	6.3	914.0	138.00



WERNER FISCHER AG
STAHLROHRE



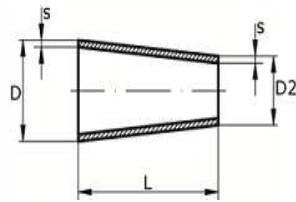
Nahtlose Einschweissbogen

ST 35.8/I-S DIN 17175 (Wst. 1.0305), WZ 3.1 nach EN 10204

Aussendurchmesser D	Wandstärke s	Höhe h	Radius r	Gewicht/Stk.
mm	mm	mm	mm	kg/90°
21.3	2.0	17.0	28.0	0.024
26.9	2.3	16.0	29.0	0.042
33.7	2.6	21.0	38.0	0.072
42.4	2.6	27.0	48.0	0.110
48.3	2.6	33.0	57.0	0.160
57.0	2.9	44.0	72.0	0.260
60.3	2.9	46.0	76.0	0.300
76.1	2.9	57.0	95.0	0.480
88.9	3.2	70.0	114.0	0.700
101.6	3.6	83.0	133.5	1.100
108.0	3.6	89.0	142.5	1.200
114.3	3.6	95.0	152.0	1.400
133.0	4.0	115.0	181.0	2.200
139.7	4.0	120.0	190.0	2.400
159.0	4.5	137.0	216.0	3.500
168.3	4.5	145.0	229.0	3.500
219.1	6.3	195.0	305.0	9.000
273.0	6.3	245.0	381.0	15.000
323.9	7.1	295.0	457.0	24.000



WERNER FISCHER AG
STAHLROHRE



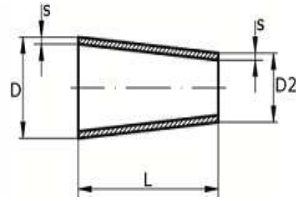
Reduzierstücke zentrisch/konzentrisch

NFA49-184 St. 37.0 / DIN 2616 St. 35.8

d1 x s1	d2 x S2	L	Ausführung
mm	mm	mm	
26.9 x 2.3	17.2 x 1.8	38	DIN
	21.3 x 2.0	38	DIN
33.7 x 2.6	21.3 x 2.0	50	DIN
	26.9 x 2.9	35	NF
42.4 x 2.6	21.3 x 2.0	50	DIN
	26.9 x 2.3	51	NF
	33.7 x 2.6	39	NF
48.3 x 2.6	21.3 x 2.0	64	DIN
	26.9 x 2.3	67	NF
	33.7 x 2.6	55	NF
	42.4 x 2.6	38	NF
57.0 x 2.9	48.3 x 2.6	45	NF
60.3 x 2.9	33.7 x 2.6	77	NF
	42.4 x 2.6	76	NF
	44.5 x 2.6	76	DIN
	48.3 x 2.6	50	NF
	48.3 x 2.6	76	DIN
76.1 x 2.9	33.7 x 2.6	90	DIN
	42.4 x 2.6	95	NF
	48.3 x 2.6	84	NF
	48.3 x 2.6	90	DIN
	57.0 x 2.9	63	NF
	60.3 x 2.9	63	NF
88.9 x 3.2	33.7 x 2.6	90	DIN
	42.4 x 2.6	90	DIN
	48.3 x 2.6	108	NF
	48.3 x 2.6	90	DIN
	57.0 x 2.9	90	NF
	60.3 x 2.9	86	NF
	60.3 x 2.9	90	DIN
	76.1 x 2.9	56	NF
108.0 x 3.6	48.3 x 2.6	102	DIN
	60.3 x 2.9	122	NF
	76.1 x 2.9	92	NF
	88.9 x 3.2	68	NF



WERNER FISCHER AG
STAHLROHRE



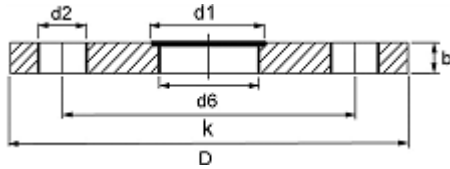
Reduzierstücke zentrisch/konzentrisch

NFA49-184 St. 37.0 / DIN 2616 St. 35.8

d1 x s1	d2 x S2	L	Ausführung
mm	mm	mm	
114.3 x 3.6	60.3 x 2.9	143	NF
	76.1 x 2.9	114	NF
	88.9 x 3.2	90	NF
133.0 x 4.0	76.1 x 2.9	147	NF
	88.9 x 3.2	122	NF
	108.0 x 3.6	87	NF
	114.3 x 3.6	75	NF
139.7 x 4.0	60.3 x 2.9	127	DIN
	76.1 x 2.9	159	NF
	88.9 x 3.2	135	NF
	108.0 x 3.6	99	NF
	114.3 x 3.6	88	NF
159.0 x 4.5	88.9 x 3.2	172	NF
	108.0 x 3.6	124	NF
	114.3 x 3.6	124	NF
	133.0 x 4.0	89	NF
168.3 x 4.5	88.9 x 3.2	189	NF
	108.0 x 3.6	140	DIN
	114.3 x 3.6	140	NF
	139.7 x 4.0	140	DIN
219.1 x 6.3	114.3 x 3.6	210	NF
	139.7 x 4.0	170	NF
	159.0 x 4.5	140	NF
	168.3 x 4.5	130	NF



WERNER FISCHER AG
STAHLROHRE

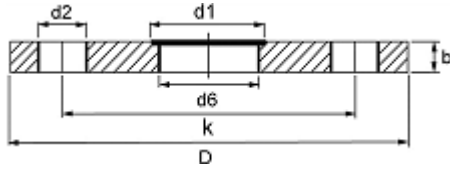


Glatte Flanschen VSM 18695 / DIN 2573, PN 6 , ST 37.2

DN	d1	D	k	b	Schrauben	Schrauben
	mm	mm	mm	mm	Stück	Länge
15	20.0	80	55	10	4	M10 - 35
	21.3	80	55	10	4	M10 - 35
20	25.0	90	65	12	4	M10 - 35
	26.9	90	65	12	4	M10 - 35
25	33.7	100	75	12	4	M10 - 35
32	38.0	120	90	14	4	M12 - 45
	42.4	120	90	14	4	M12 - 45
40	44.5	130	100	14	4	M12 - 45
	48.3	130	100	14	4	M12 - 45
50	57.0	140	110	14	4	M12 - 45
	60.3	140	110	14	4	M12 - 45
65	76.1	160	130	14	4	M12 - 45
80	88.9	190	150	16	4	M16 - 50
100	108.0	210	170	16	4	M16 - 50
	114.3	210	170	16	4	M16 - 50
125	133.0	240	200	18	8	M16 - 55
	139.7	240	200	18	8	M16 - 55
150	159.0	265	225	20	8	M16 - 60
	168.3	265	225	20	8	M16 - 60
200	219.1	320	280	22	8	M16 - 65
250	267.0	375	335	24	12	M16 - 65
	273.0	375	335	24	12	M16 - 65
300	323.9	440	395	24	12	M20 - 70



WERNER FISCHER AG
STAHLROHRE

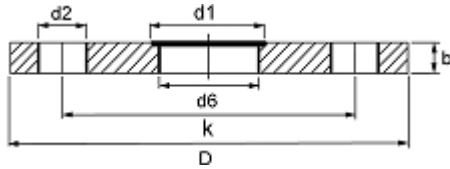


Glatte Flanschen VSM 18696 / DIN 2576, PN 10 , ST 37.2

DN	d1	D	k	b	Schrauben	Schrauben
	mm	mm	mm	mm	Stück	Länge
15	20.0	95	65	12	4	M12 - 45
	21.3	95	65	12	4	M12 - 45
20	25.0	105	75	14	4	M12 - 45
	26.9	105	75	14	4	M12 - 45
25	33.7	115	85	14	4	M12 - 45
32	38.0	140	100	16	4	M16 - 50
	42.4	140	100	16	4	M16 - 50
40	44.5	150	110	16	4	M16 - 50
	48.3	150	110	16	4	M16 - 50
50	57.0	165	125	18	4	M16 - 55
	60.3	165	125	18	4	M16 - 55
65	76.1	185	145	18	4	M16 - 55
80	88.9	200	160	20	8	M16 - 60
100	108.0	220	180	22	8	M16 - 60
	114.3	220	180	22	8	M16 - 60
125	133.0	250	210	24	8	M16 - 65
	139.7	250	210	24	8	M16 - 65
150	159.0	285	240	24	8	M20 - 70
	168.3	285	240	24	8	M20 - 70
200	219.1	340	295	26	8	M20 - 70
250	267.0	395	350	28	12	M20 - 80
	273.0	395	350	28	12	M20 - 80
300	323.9	445	400	28	12	M20 - 80



WERNER FISCHER AG
STAHLROHRE

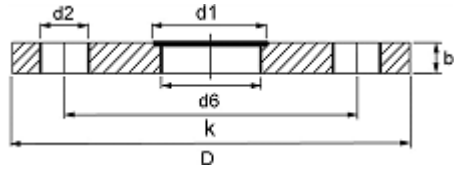


Glatte Flanschen VSM 18697, PN 16 , ST 37.2

DN	d1	D	k	b	Schrauben	Schrauben
	mm	mm	mm	mm	Stück	Länge
15	20.0	95	65	12	4	M12 - 45
	21.3	95	65	12	4	M12 - 45
20	25.0	105	75	14	4	M12 - 45
	26.9	105	75	14	4	M12 - 45
25	33.7	115	85	14	4	M12 - 45
32	38.0	140	100	16	4	M16 - 50
	42.4	140	100	16	4	M16 - 50
40	44.5	150	110	16	4	M16 - 50
	48.3	150	110	16	4	M16 - 50
50	57.0	165	125	18	4	M16 - 55
	60.3	165	125	18	4	M16 - 55
65	76.1	185	145	18	4	M16 - 55
80	88.9	200	160	20	8	M16 - 60
100	108.0	220	180	22	8	M16 - 60
	114.3	220	180	22	8	M16 - 60
125	133.0	250	210	24	8	M16 - 65
	139.7	250	210	24	8	M16 - 65
150	159.0	285	240	24	8	M20 - 70
	168.3	285	240	24	8	M20 - 70
200	219.1	340	295	26	12	M20 - 90
250	267.0	405	355	32	12	M24 - 100
	273.0	405	355	32	12	M24 - 100
300	323.9	460	410	32	12	M24 - 100



WERNER FISCHER AG
STAHLROHRE

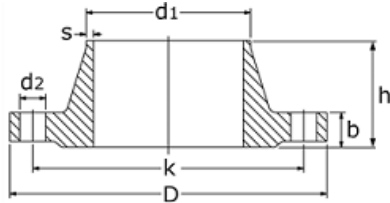


Glatte Flanschen VSM 18699, PN 40 , ST 37.2

DN	d1	D	k	b	Schrauben	Schrauben
	mm	mm	mm	mm	Stück	Länge
32	38.0	140	100	18	4	M16 – 55
	42.4	140	100	18	4	M16 – 55
40	48.3	150	110	18	4	M16 – 55
50	60.3	165	125	20	4	M16 – 60
65	76.1	185	145	24	8	M16 – 65
80	88.9	200	160	26	8	M16 – 70
100	114.3	235	190	26	8	M20 – 75
125	139.7	270	220	28	8	M24 – 85
150	159.0	300	250	30	8	M24 – 85
	168.3	300	250	30	8	M24 – 85



WERNER FISCHER AG
STAHLROHRE

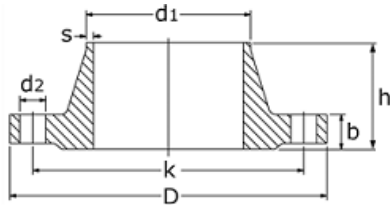


Vorschweissflanschen VSM 18716 / DIN 2631, PN 6, ST 37.2

DN	d1	D	k	b	Schrauben	Schrauben
	mm	mm	mm	mm	Stück	Länge
15	21.3	80	55	10	4	M10 – 40
20	26.9	90	65	12	4	M10 – 45
25	33.7	100	75	12	4	M10 – 45
32	38.0	120	90	14	4	M12 – 45
	42.4	120	90	14	4	M12 – 45
40	44.5	130	100	14	4	M12 – 45
	48.3	130	100	14	4	M12 – 45
50	57.0	140	110	14	4	M12 – 45
	60.3	140	110	14	4	M12 – 45
65	76.1	160	130	14	4	M12 – 45
80	88.9	190	150	16	4	M16 – 50
100	108.0	210	170	16	4	M16 – 50
	114.3	210	170	16	4	M16 – 50
125	133.0	240	200	18	8	M16 – 55
	139.7	240	200	18	8	M16 – 55
150	159.0	265	225	20	8	M16 – 60
	168.3	265	225	20	8	M16 – 60
200	219.1	320	280	22	8	M16 – 65
250	273.0	375	335	24	12	M16 – 65
300	323.9	440	395	24	12	M20 – 70

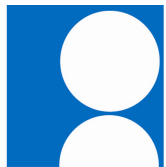


WERNER FISCHER AG
STAHLROHRE

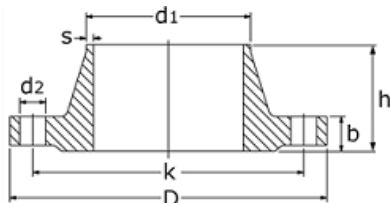


Vorschweissflanschen VSM 18717 / DIN 2632, PN 10, ST 37.2

DN	d1	D	k	b	Schrauben	Schrauben
	mm	mm	mm	mm	Stück	Länge
15	21.3	95	65	14	4	M12 – 40
20	26.9	105	75	16	4	M12 – 45
25	33.7	115	85	16	4	M12 – 45
32	38.0	140	100	16	4	M16 – 50
	42.4	140	100	16	4	M16 – 50
40	44.5	150	110	16	4	M16 – 50
	48.3	150	110	16	4	M16 – 50
50	57.0	165	125	18	4	M16 – 55
	60.3	165	125	18	4	M16 – 55
65	76.1	185	145	18	8	M16 – 55
80	88.9	200	160	20	8	M16 – 60
100	108.0	220	180	20	8	M16 – 60
	114.3	220	180	20	8	M16 – 60
125	133.0	250	210	22	8	M16 – 65
	139.7	250	210	22	8	M16 – 65
150	159.0	285	240	22	8	M20 – 70
	168.3	285	240	22	8	M20 – 70
200	219.1	340	295	26	8	M20 – 70
250	273.0	395	350	28	12	M24 – 80
300	323.9	445	400	28	12	M24 – 80

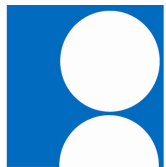


WERNER FISCHER AG
STAHLROHRE

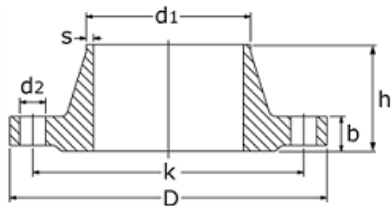


Vorschweisflanschen VSM 18718 / DIN 2633, PN 16, ST 37.2

DN	d1	D	k	b	Schrauben	Schrauben
	mm	mm	mm	mm	Stück	Länge
15	21.3	95	65	14	4	M12 – 40
20	26.9	105	75	16	4	M12 – 45
25	33.7	115	85	16	4	M12 – 45
32	38.0	140	100	16	4	M16 – 50
	42.4	140	100	16	4	M16 – 50
40	44.5	150	110	16	4	M16 – 50
	48.3	150	110	16	4	M16 – 50
50	57.0	165	125	18	4	M16 – 55
	60.3	165	125	18	4	M16 – 55
65	76.1	185	145	18	8	M16 – 55
80	88.9	200	160	20	8	M16 – 60
100	108.0	220	180	20	8	M16 – 60
	114.3	220	180	20	8	M16 – 60
125	133.0	250	210	22	8	M16 – 65
	139.7	250	210	22	8	M16 – 65
150	159.0	285	240	22	8	M20 – 70
	168.3	285	240	22	8	M20 – 70
200	219.1	340	295	24	12	M20 – 90
250	273.0	405	355	26	12	M24 – 80
300	323.9	460	410	28	12	M24 – 80

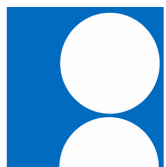


WERNER FISCHER AG
STAHLROHRE

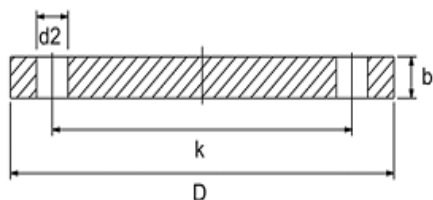


Vorschweissflanschen VSM 18720 / DIN 2635, PN 40, ST 37.2

DN	d1	D	k	b	Schrauben	Schrauben
	mm	mm	mm	mm	Stück	Länge
15	21.3	95	65	16	4	M12 – 50
20	26.9	105	75	18	4	M12 – 50
25	33.7	115	85	18	4	M12 – 50
32	38.0	140	100	18	4	M16 – 55
	42.4	140	100	18	4	M16 – 55
40	48.3	150	110	18	4	M16 – 55
50	57.0	165	125	20	4	M16 – 60
	60.3	165	125	20	4	M16 – 60
65	76.1	185	145	22	8	M16 – 65
80	88.9	200	160	24	8	M16 – 65
100	108.0	235	190	24	8	M20 – 70
	114.3	235	190	24	8	M20 – 70
125	133.0	270	220	26	8	M24 – 80
	139.7	270	220	26	8	M24 – 80
150	159.0	300	250	28	8	M24 – 85
	168.3	300	250	28	8	M24 – 85
200	219.1	375	320	34	12	M27 – 100
250	273.0	450	385	38	12	M30 – 110
300	323.9	450	385	42	16	M30 – 120

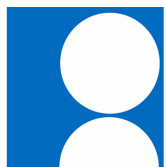


WERNER FISCHER AG
STAHLROHRE

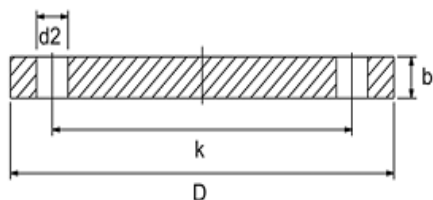


Blindflanschen VSM 18703 / DIN 2527, PN 6

DN	D	k	b	Schrauben	Schrauben
	mm	mm	mm	Stück	Länge
15	80	55	10	4	M10 – 35
20	90	65	12	4	M10 – 35
25	100	75	12	4	M10 – 35
32	120	90	14	4	M12 – 45
40	130	100	14	4	M12 – 45
50	140	110	14	4	M12 – 45
65	160	130	14	4	M12 – 45
80	190	150	16	4	M16 – 50
100	210	170	16	4	M16 – 50
125	240	200	18	8	M16 – 55
150	265	225	20	8	M16 – 60
200	320	280	22	8	M16 – 65
250	375	335	24	12	M16 – 65
300	440	395	24	12	M20 – 70

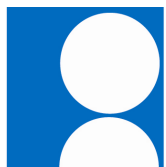


WERNER FISCHER AG
STAHLROHRE

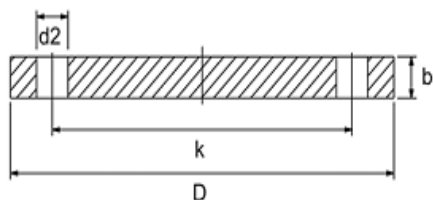


Blindflanschen VSM 18703 / DIN 2527, PN 10

DN	D	k	b	Schrauben	Schrauben
	mm	mm	mm	Stück	Länge
15	95	65	12	4	M12 – 45
20	105	75	14	4	M12 – 45
25	115	85	14	4	M12 – 45
32	140	100	16	4	M16 – 50
40	150	110	16	4	M16 – 50
50	165	125	18	4	M16 – 55
65	185	145	18	4	M16 – 55
80	200	160	20	8	M16 – 60
100	220	180	22	8	M16 – 60
125	250	210	24	8	M16 – 65
150	285	240	24	8	M20 – 70
200	340	295	26	8	M20 – 75
250	395	350	28	12	M20 – 80
300	445	400	28	12	M20 – 80

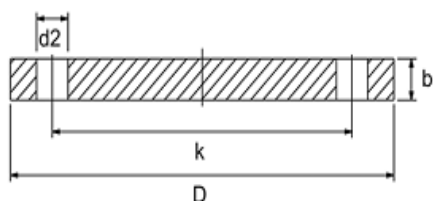


WERNER FISCHER AG
STAHLROHRE



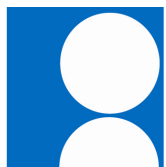
Blindflanschen VSM 18703 / DIN 2527, PN 16

DN	D	k	b	Schrauben	Schrauben
	mm	mm	mm	Stück	Länge
15	95	65	12	4	M12 – 45
20	105	75	14	4	M12 – 45
25	115	85	14	4	M12 – 45
32	140	100	16	4	M16 – 50
40	150	110	16	4	M16 – 50
50	165	125	18	4	M16 – 55
65	185	145	18	4	M16 – 55
80	200	160	20	8	M16 – 60
100	220	180	22	8	M16 – 60
125	250	210	24	8	M16 – 65
150	285	240	24	8	M20 – 70
200	340	295	26	12	M20 – 90
250	405	355	32	12	M24 – 100
300	460	410	32	12	M24 – 100

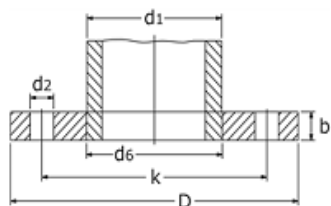


Blindflanschen VSM 18703 / DIN 2527, PN 40

DN	D	k	b	Schrauben	Schrauben
	mm	mm	mm	Stück	Länge
20	105	75	16	4	M12 – 50
25	115	85	16	4	M12 – 50
32	140	100	18	4	M16 – 55
40	150	110	18	4	M16 – 55
50	165	125	20	4	M16 – 60
65	185	145	24	8	M16 – 65
80	200	160	26	8	M16 – 70
100	235	190	26	8	M20 – 75

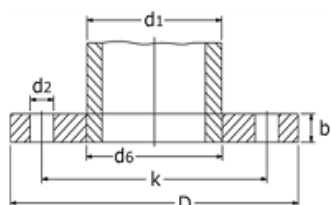


WERNER FISCHER AG
STAHLROHRE



Gewindeflanschen VSM 18685, PN 6 / verzinkt

DN	d1	D	k	b	Schrauben	Schrauben
	mm	mm	mm	mm	Stück	Länge
15	½"	80	55	14	4	M12 – 45
20	¾"	90	65	16	4	M12 – 45
25	1"	100	75	16	4	M12 – 45
32	1 ¼"	120	90	16	4	M16 – 50
40	1 ½"	130	100	16	4	M16 – 50
50	2"	140	110	18	4	M16 – 55
65	2 ½"	160	130	18	4	M16 – 55
80	3"	190	150	20	8	M16 – 60
100	4"	210	170	20	8	M16 – 60



Gewindeflanschen VSM 18685, PN 16 / verzinkt

DN	d1	D	k	b	Schrauben	Schrauben
	mm	mm	mm	mm	Stück	Länge
15	½"	95	65	14	4	M12 – 45
20	¾"	105	75	16	4	M12 – 45
25	1"	115	85	16	4	M12 – 45
32	1 ¼"	140	100	16	4	M16 – 50
40	1 ½"	150	110	16	4	M16 – 50
50	2"	165	125	18	4	M16 – 55
65	2 ½"	185	145	18	4	M16 – 55
80	3"	200	160	20	8	M16 – 60
100	4"	220	180	20	8	M16 – 60